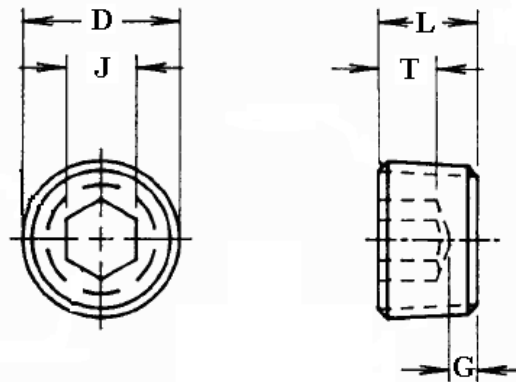




### Socket Pressure Plug, Flush (PTF) Type 7/8 Taper, Plain, Manufactured in the USA

The information below lists the required dimensional, chemical and physical characteristics of the products in this purchase order. If the order received does not meet these requirements, it may result in a supplier corrective action request, which could jeopardize your status as an approved vendor. Unless otherwise specified, all referenced consensus standards must be adhered to in their entirety.



Nominal Size	D		Threads per Inch	J		T	G	L		
	O.D.			Hex Socket Size		Key Engagement	Wall Thickness	Overall Length		
	Nom.			Nom.		Min.	Min.	Nom.	Max.	Min.
1/16	0.312		27	5/32	0.156	0.140	0.062	0.312	0.324	0.300
1/8	0.405		27	3/16	0.187	0.140	0.062	0.312	0.324	0.300
1/4	0.540		18	1/4	0.250	0.218	0.073	0.438	0.457	0.417
3/8	0.675		18	5/16	0.312	0.250	0.084	0.500	0.520	0.480
1/2	0.840		14	3/8	0.375	0.312	0.095	0.562	0.582	0.542
3/4	1.050		14	9/16	0.562	0.312	0.125	0.625	0.645	0.605

#### Specification Requirements:

- Dimensions: See dimensions above.
- Material & Mechanical Properties: Alloy Steel heat treated to HRC 36-43
- Threads: Per ASME B1.20.3; B1.20.5
- Product Marking: Six equally spaced identification grooves are located equidistant between corners of hexagon socket and edge of chamfer with no particular alignment with hexagon. On 1/16 - 27 plugs, three identification grooves are permitted because of space limitations.