



Holo-Krome®
The Difference is Easy To See

800-688-8949 • www.Holo-Krome.com • Sparks, MD

PRODUCT DATA SHEET

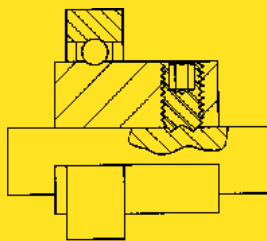


Socket Set Screws

Applications - Set Screws



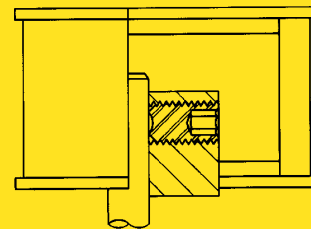
Cup Point



- The most commonly used point style
- Is commonly used for the fast permanent or semi-permanent assembly of parts; such as collars, pulleys, gears or bearings on shafting of hardness up to within 10 to 15 Rockwell C points of the screw hardness and where the digging in of the point is not undesirable



Internal Knurl Point



- Smaller turning radius of the internal knurl point means; more of the tightening torque is converted directly into the force needed to penetrate the shaft instead of being wasted moving material circumferentially. The deeper penetration means greater holding power. With the knurl on the inside of the cup point any chips which might dislodge during tightening are trapped within the cup. They cannot shake loose and cause damage in applications demanding cleanliness.
- The forged counter clockwise knurl provides a

Benefits:

- Holo-Krome Thermo-Forged® Socket Set Screws provide a deep socket with smooth walls with no broaching chips
- Inch Series: Meets ASME/ANSI B18.3 and ASTM F912
- Class 3A thread fit
- Holo-Krome Set Screws are provided in various styles — cup point and Holo-Knurl®

Cup Point Socket Set Screw

Holo-Knurl Socket Set Screw

DIAMETER	LENGTH UNDER HEAD	PRODUCT CODE NUMBER		DIAMETER	LENGTH UNDER HEAD	PRODUCT CODE NUMBER		DIAMETER	LENGTH UNDER HEAD	PRODUCT CODE NUMBER			
		UNRC	UNRF			UNRC	UNRF			UNRC	UNRF		
#4 (.112") 40 UNC 48 UNF .050" Key	1/8"	32020	33020	3/8" (.375") 16 UNC 24 UNF 3/16" Key	1/4"	32164	33104	#4 (.112") 40 UNC .050" Key	1/8"	42002	-		
	3/16"	32022	33022		3/8"	32168	33106		#6 (.138") 32 UNC 40 UNF 1/16" Key	1/8"	42008	43006	
	1/4"	32024	33024		7/16"	32170	-			3/16"	42010	-	
	5/16"	32026	-		1/2"	32172	33108			1/4"	42012	-	
	3/8"	32028	-		5/8"	32174	33110			#8 (.164") 32 UNC 5/64" Key	1/8"	42014	-
	1/2"	32030	-		3/4"	32176	33112				3/16"	42016	-
	5/8"	32032	-		7/8"	32178	-				1/4"	42018	-
1/8"	32034	33026	1"	32180	33114	3/8"	42020	-					
3/16"	32036	-	1-1/4"	32182	33116	#10 (.190") 24 UNC 32 UNF 3/32" Key	3/16"	-	43008				
1/4"	32038	-	1-1/2"	32184	33118		1/4"	42024	43010				
5/16"	32040	-	1-3/4"	32186	-		3/8"	-	43012				
3/8"	32042	-	2"	32188	-		1/2"	-	43014				
#5 (.125") 40 UNC 44 UNF 1/16" Key	1/2"	32044	-	7/16" (.437") 14 UNC 20 UNF 7/32" Key	2-1/2"	32190	-	1/4" (.250") 20 UNC 28 UNF 1/8" Key	3/16"	42026	43016		
	5/8"	32046	-		3/8"	32192	33120		1/4"	42028	43018		
	3/4"	32048	-		7/16"	32194	33122		5/16"	42030	43020		
	1/8"	32050	33032		1/2"	32196	33124		20 UNC	42032	43022		
	3/16"	32052	33034		5/8"	32198	-		28 UNF	42034	-		
	1/4"	32054	33036		3/4"	32200	-		1/8" Key	42036	-		
	5/16"	32056	-		7/8"	32202	-		5/16" (.312") 18 UNC 24 UNF 5/32" Key	1/4"	42038	43024	
3/8"	32058	33040	1"	32204	-	5/16"	42040	43026					
1/2"	32060	-	1-1/4"	32206	-	3/8"	42042	43028					
5/8"	32062	-	1-1/2"	32208	-	1/2"	42043	43030					
3/4"	32064	-	2"	32210	-	5/8"	42044	-					
7/8"	32066	-	3"	32234	-	3/4"	42045	-					
#6 (.138") 32 UNC 40 UNF 1/16" Key	1"	32068	-	1/2" (.500") 13 UNC 20 UNF 1/4" Key	1/2"	32212	-	3/8" (.375") 16 UNC 24 UNF 3/16" Key	1"	42046	-		
	3/16"	32070	33042		1/2"	32214	33126		3/8"	42047	43032		
	3/16"	32072	33044		5/8"	32216	-		1/2"	42048	43034		
	1/4"	32074	33046		3/4"	32218	33128		3/4"	42049	-		
	5/16"	32076	-		7/8"	32220	-		1"	42050	-		
	3/8"	32078	33050		1"	32222	33130		1/2" (.500") 13 UNC 1/4" Key	1/2"	42052	-	
	7/16"	32080	-		1-1/4"	32224	-	5/8"		42054	-		
1/2"	32082	-	1-1/2"	32226	-	3/4"	42056	-					
5/8"	32084	-	1-3/4"	32228	-	1"	42058	-					
3/4"	32086	-	2"	32230	-	5/16" (.312") 18 UNC 24 UNF 5/32" Key	1/2" (.500") 13 UNC 1/4" Key	-					
7/8"	32088	-	2-1/2"	32232	-								
1"	32090	-	3"	32234	-								
#8 (.164") 32 UNC 36 UNF 5/64" Key	3/16"	32092	33054	5/8" (.625") 11 UNC 18 UNF 5/16" Key	1/2"				32236	-	1/4" (.250") 20 UNC 28 UNF 1/8" Key	-	
	1/4"	32094	33056		5/8"				32238	33132			
	5/16"	32096	33058		3/4"				32240	-			
	3/8"	32098	33060		1"				32242	33134			
	1/2"	32100	33062		1-1/4"	32244	-						
	5/8"	32102	33064		1-1/2"	32246	-						
	3/4"	32104	33066		1-3/4"	32248	-						
7/8"	32106	-	2"	32250	-								
1"	32108	33068	2-1/2"	32252	-								
#10 (.190") 24 UNC 32 UNF 3/32" Key	1-1/4"	32110	33070	3/4" (.750") 10 UNC 3/8" Key	3"	32254	-	5/16" (.312") 18 UNC 24 UNF 5/32" Key	-				
	3/16"	32112	33072		5/8"	32256	-						
	1/4"	32114	33074		3/4"	32258	-						
	5/16"	32116	33076		1"	32260	-						
	3/8"	32118	33078		1-1/4"	32262	-						
	1/2"	32120	33080		1-1/2"	32264	-						
	5/8"	32122	33082		1-3/4"	32266	-						
3/4"	32124	33084	2"	32268	-								
7/8"	32126	-	2-1/2"	32270	-								
1"	32128	33086	3"	32272	-								
1/4" (.250") 20 UNC 28 UNF 1/8" Key	1-1/4"	32130	33088	7/8" (.875") 9 UNC 1/2" Key	7/8"	32274	-	1/2" (.500") 13 UNC 1/4" Key	-				
	1-1/2"	32132	-		1"	32276	-						
	1-3/4"	32134	-		2-1/2"	32282	-						
	2"	32136	-		1" (1.000") 8 UNC 9/16" Key	1"	32286			-			
	1/4"	32138	33090			1-1/2"	32288			-			
	5/16"	32140	33092			2"	32290			-			
	3/8"	32142	33094			3"	32294			-			
1/2"	32146	33096	5/16" (.312") 18 UNC 24 UNF 5/32" Key	-									
5/8"	32148	33098											
3/4"	32150	33100											
7/8"	32152	-											
1"	32154	33102	1-1/4"	32156	-								
1-1/2"	32158	-	1-1/2"	32158	-								
1-3/4"	32160	-	1-3/4"	32160	-								
2"	32162	-	2"	32162	-								