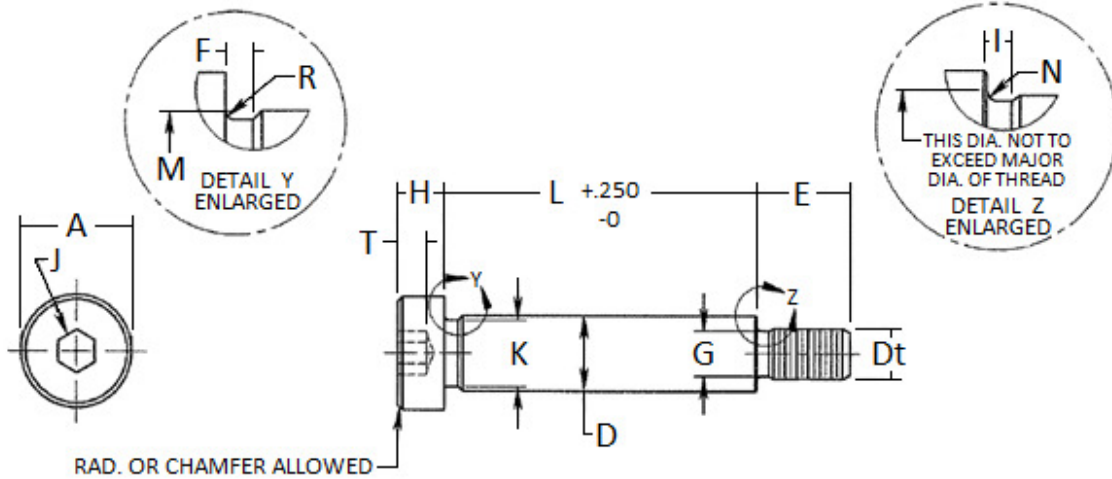




### Metric, Socket Head Shoulder Screw (Stripper Bolt), Black Oxide, Manufactured in the USA

The information below lists the required dimensional, chemical and physical characteristics of the products in this purchase order. If the order received does not meet these requirements, it may result in a supplier corrective action request, which could jeopardize your status as an approved vendor. Unless otherwise specified, all referenced consensus standards must be adhered to in their entirety.



Nominal Screw Size or Basic Shoulder Diameter	D		A		H		J	T	M	R
	Shoulder Diameter		Head Diameter		Head Height		Hexagon Socket Size	Key Engagement	Head Fillet Extension Diameter	Shoulder Neck Fillet
	Max.	Min.	Max.	Min.	Max.	Min.	Nom.	Min.	Max.	Min.
6.0	6.00	5.982	10.00	9.78	4.50	4.32	3	2.4	6.8	0.25
8.0	8.00	7.978	13.00	12.73	5.50	5.32	4	3.3	9.2	0.40
10.0	10.00	9.978	16.00	15.73	7.00	6.78	5	4.2	11.2	0.40
12.0	12.00	11.973	18.00	17.73	9.00	8.78	6	4.9	14.2	0.60
16.0	16.00	15.973	24.00	23.67	11.00	10.73	8	6.6	18.2	0.60

Nominal Screw Size or Basic Shoulder Diameter	K	F	Dt		G		I	N	E	
	Shoulder Neck Diameter	Shoulder Neck Width	Basic Thread Diameter	Thread Pitch	Thread Neck Diameter		Thread Neck Width	Thread Neck Fillet Radius	Thread Length	
	Min.	Max.	Max.	Min.	Max.	Min.	Min.	Max.	Max.	Min.
6.0	5.42	2.5	M5	0.8	3.86	3.68	2.0	0.50	9.75	9.25
8.0	7.42	2.5	M6	1	4.58	4.40	2.5	0.53	11.25	10.75
10.0	9.42	2.5	M8	1.25	6.23	6.03	3.1	0.64	13.25	12.75
12.0	11.42	2.5	M10	1.5	7.89	7.66	3.7	0.77	16.40	15.60
16.0	15.42	2.5	M12	1.75	9.54	9.31	4.4	0.87	18.40	17.60

Page 2 of 2	<b>Holo-Krome Product Standard</b>	REV-01
Date: February 29, 2016		HK.M.STRIP.BO



### Specification Requirements:

- Dimensions: See Table Above
- Threads: 4g6g
- Material: Alloy Steel
- Mechanical Properties: ISO 898-1; Class 12.9 per ISO 7379
- Finish: Black Oxide (Thermal or Chemical) on un-ground surfaces.
- Product Marking: HK in the Broach
- Material Test Reports: The MTR must have documented lot traceability, dimensional results, full chemical test results and full mechanical test results to the specification(s) above. In addition, the MTR shall be in full compliance with Fastenal's MTR Requirements.
  
- Quality Assurance Provisions: Category 3 of ASME B18.18