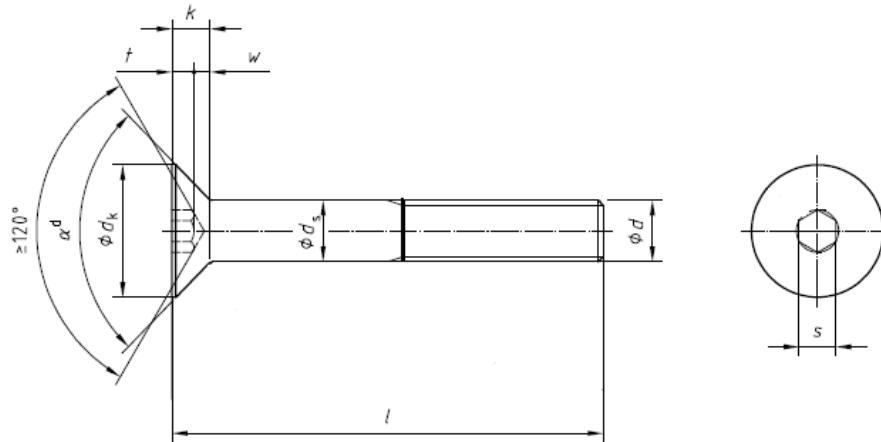




Flat Head Socket Cap Screws, Metric, Class 12.9, Black Oxide, Manufactured in the USA

The information below lists the required dimensional, chemical and physical characteristics of the products in this purchase order. If the order received does not meet these requirements, it may result in a supplier corrective action request, which could jeopardize your status as an approved vendor. Unless otherwise specified, all referenced consensus standards must be adhered to in their entirety.



Nominal Size	Thread Pitch	ds		dk		k	s			t	w
		Body Diameter		Head Diameter			Hexagon Socket Size	Key Engagement	Socket Wall		
		Max.	Min.	Theoretical	Actual	Head Height				Nom.	Max.
M3	0.5	3.00	2.86	6.72	5.54	1.86	2.0	2.045	2.02	1.1	0.25
M4	0.7	4.00	3.82	8.96	7.53	2.48	2.5	2.560	2.52	1.5	0.45
M5	0.8	5.00	4.82	11.20	9.43	3.10	3.0	3.071	3.02	1.9	0.66
M6	1.0	6.00	5.82	13.44	11.34	3.72	4.0	4.084	4.020	2.2	0.70
M8	1.25	8.00	7.78	17.92	15.24	4.96	5.0	5.084	5.02	3.0	1.16
M10	1.50	10.00	9.78	22.40	19.22	6.20	6.0	6.095	6.020	3.6	1.62
M12	1.75	12.00	11.73	26.88	23.12	7.44	8.0	8.115	8.025	4.3	1.80
M16	2.0	16.00	15.73	33.60	29.01	8.80	10.0	10.115	10.025	4.8	2.20

Specification Requirements:

- Dimensions: ISO 10642 (1997)
- Threads: 4g6g
- Material & Mechanical Properties: ISO 898-1 Grade 12.9 per ISO 10642
- Finish: Thermal or Chemical Black Oxide
- Material Test Reports: The MTR must have documented lot traceability, including full chemical and mechanical figures, to the specification(s) above.